

# Mouse B4galt1 Antibody (11H3), mAb, Mouse

## PRODUCT INFORMATION

### Description

B4GALT1 (Beta-1,4-Galactosyltransferase 1) is a protein coding gene. Among its related pathways are transport to the Golgi and subsequent modification and metabolism. B4galt1 is one of seven beta-1,4-galactosyltransferase (beta4GalT) genes. They encode type II membrane-bound glycoproteins that appear to have exclusive specificity for the donor substrate UDP-galactose. The Golgi complex form catalyzes the production of lactose in the lactating mammary gland and could also be responsible for the synthesis of complex-type N-linked oligosaccharides in many glycoproteins as well as the carbohydrate moieties of glycolipids. The cell surface form functions as a recognition molecule during a variety of cell to cell and cell to matrix interactions, as those occurring during development and egg fertilization, by binding to specific oligosaccharide ligands on opposing cells or in the extracellular matrix.

### Specificity

The product is specific for mouse B4galt1. This antibody binds with recombinant B4galt1 protein in ELISA and western blot.

### Concentration

0.5 mg/ml, lyophilized with PBS, pH 7.4, containing 0.02% sodium azide. (It may be customized for bulk orders.)

### Note

GenScript can customize this product per the customer's request including product size, buffer components, etc.

### Reconstitution

Reconstitute the lyophilized antibody with deionized water (or equivalent) to a final concentration of 0.5 mg/ml.

### Storage

The lyophilized product remains stable up to 1 year at -20 °C from date of receipt. Upon reconstitution, it can be stored for 2-3 weeks at 2-8 °C or for up to 12 months at -20 °C or below. Avoid repeated freezing and thawing cycles.

### Applications

Working concentrations for specific applications should be determined by the investigators. The appropriate concentration may be affected by secondary antibody affinity, antigen concentration, the sensitivity of the method of detection, temperature, the length of the incubations, and other factors. The suitability of this antibody for applications other than those listed below has not been determined. The following concentration ranges are recommended starting points for this product.

**Cat. No.:** A01890-40

**Host:** Mouse

**Size:** 40 µg

**Ig Subclass:** IgG1,λ

**Clone:** 11H3

**Immunogen:** Recombinant Mouse B4galt1

**SwissProt:** P15535

**Gene ID:** 14595

**Purification:** Protein A affinity column

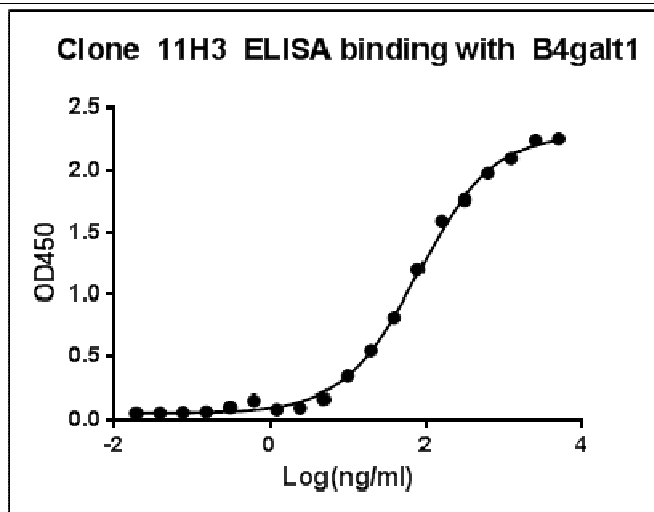
**Conjugation:** Unconjugated

**Version:** 07/20/2017

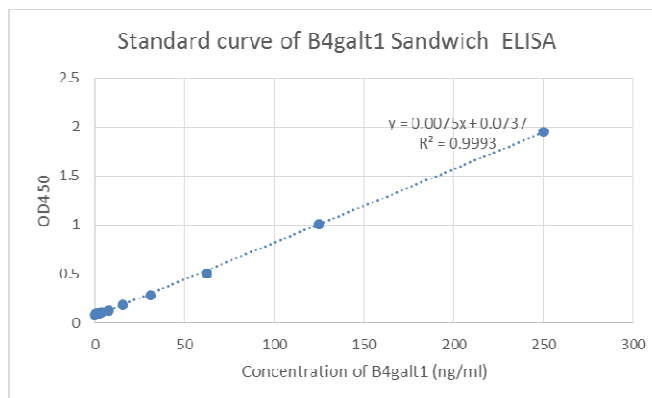
\*\* For non-clinical research use only. \*\*

**860 Centennial Ave., Piscataway, NJ 08854, USA**

ELISA detection: 0.08-0.8µg/ml  
 Western blot: 1 µg/ml  
 Other applications: user-optimized

**Example**


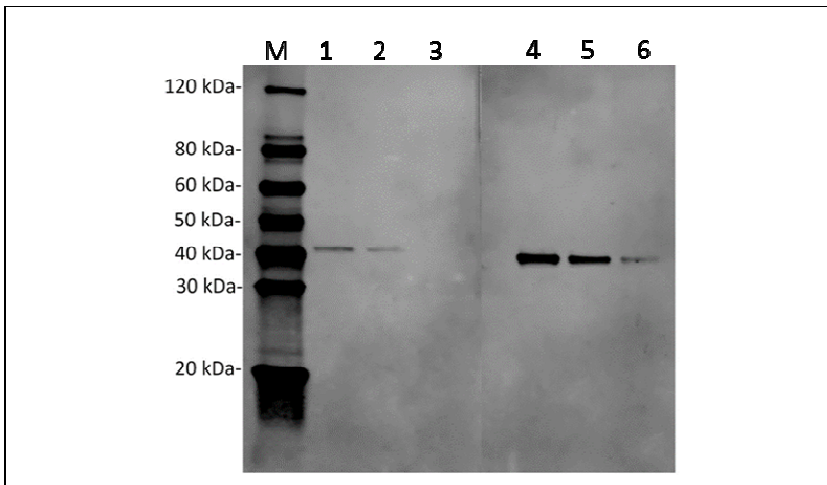
ELISA binding of **Mouse B4galt1 Antibody (11H3)** (GenScript, A01890-40) with Mouse B4galt1 recombinant protein.  
 Coating antigen: B4galt1, 1 µg/ml.  
 B4galt1 antibody dilutions start from 1000 ng/ml,  
 EC50= 79.23 ng/ml.



Standard curve of B4galt1 Sandwich ELISA. The B4galt1 Sandwich ELISA assay is developed by using **Mouse B4galt1 Antibody (11H3)** (GenScript, A01890-40) and Biotin conjugated **Mouse B4galt1 Antibody (3C9)** (GenScript, A01889-40) as capture and detect antibody, respectively.  
 From the experimental results, Mouse B4galt1 Antibody (11H3) and Mouse B4galt1 Antibody (3C9) identify different epitopes. The sensitivity is 1-2 ng/ml and the detection range is 0-100 ng/ml.

\*\* For non-clinical research use only. \*\*

**860 Centennial Ave., Piscataway, NJ 08854, USA**



Independent validation of **Mouse B4galt1 Antibody (11H3)** (GenScript, A01890-40) and **Mouse B4galt1 Antibody (3C9)** (GenScript, A01889-40) with Mouse B4galt1 recombinant protein.

Lane 1: 50 ng Mouse B4galt1 recombinant protein

Lane 2: 25 ng Mouse B4galt1 recombinant protein

Lane 3: 10 ng Mouse B4galt1 recombinant protein

Lane 4: 50 ng Mouse B4galt1 recombinant protein

Lane 5: 25 ng Mouse B4galt1 recombinant protein

Lane 6: 10 ng Mouse B4galt1 recombinant protein

Primary Antibody:

Lane 1~3: Mouse B4galt1 Antibody (3C9) (GenScript, A01889-40) 1 µg/ml

Lane 4~6: Mouse B4galt1 Antibody (11H3) (GenScript, A01890-40) 1 µg/ml

Secondary Antibody:

Goat anti-Mouse IgG (H&L) [IRDye<sup>800</sup>] (Licor,926-32211) 0.125 µg/ml

\*\* For non-clinical research use only. \*\*

**860 Centennial Ave., Piscataway, NJ 08854, USA**