

Certificate of Analysis

Product ID: OHu05205D Lot. No.: 740024-703/H55368

Product Information:

Gene Symbol: CCL14 Accession No.: NM_032963

Cloning Vector: pcDNA3.1⁺/C-(K)DYK Gene Length*: 282 bp

Cloning Strategy: CloneEZ Plasmid size: 5672 bp

Antibiotic resistance: Ampicillin, recommended concentration: 50µg/ml Amount: 10 µg

Note: * The stop codon has not been included in gene length calculation. And the detail sequence showed in attachment 2

Storage: Store at -20°C
The ORF clone is shipped at room temperature, but should be kept at -20°C for long-term storage.

QC Items	Specifications	Results	
Sequencing Alignment	Sequencing results are consistent with the targeted insert sequence.	Pass	Consistent
Vector Sequence	The flanking sequences of the cloning sites are correct.	Pass	Correct Shown in the SQD file
Restriction Digests	The size of inserted fragment is correct and free of unexpected bands suggesting contamination.	Pass	Correct Shown in attachment 1
DNA Quality	Miniprep: 10 µg OD260/280= 1.8~2.0 Free of contamination	Pass	≥ 10 µg OD260/280=1.87 Pure
Quality Grade	Research Grade	Pass	Research Grade
Appearance	Clear and free of foreign particles.	Pass	Clear Free of foreign particles
Additional Test		N/A	

Certified by *Morgan* Date: 12/15/2015

Thank you for your patronage to our Gene services! To maintain this working relationship, we shall be grateful if you can add our webpage URL into your lab website. As a token of appreciation, you will be rewarded by 1,000 EZcoupon™ points. For more information, please contact us by e-mail at web@genscript.com.

For research use only

860 Centennial Ave., Piscataway, NJ 08854, USA

Toll-Free: 1-877-436-7274

Tel: 1-732-885-9188

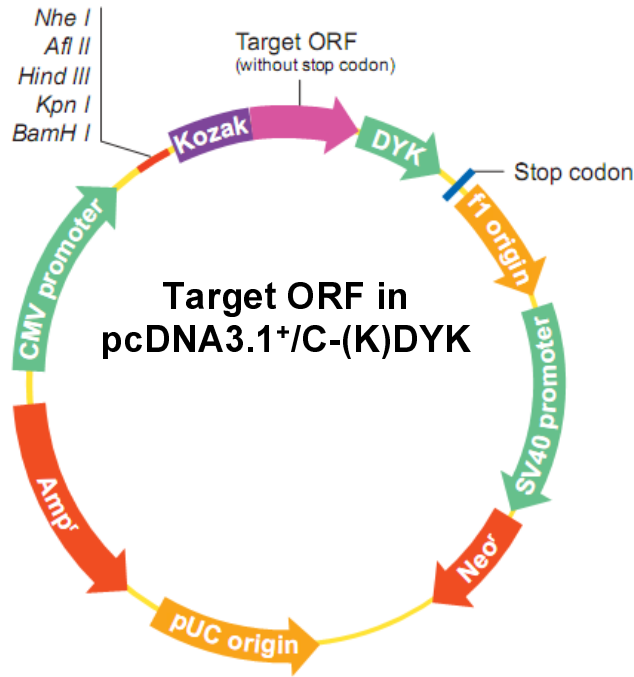
Fax: 1-732-210-0262

Email: order@genscript.com

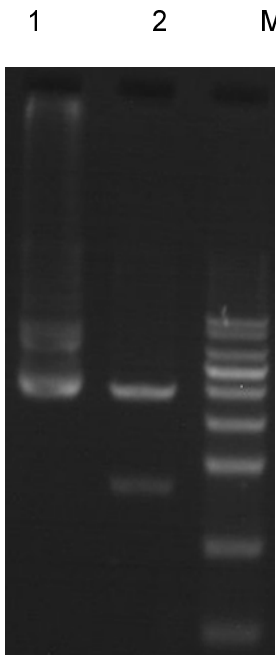
Web: www.genscript.com

Plasmid Construct Map

The ORF was cloned in pcDNA3.1⁺/C-(K)DYK by CloneEZ.

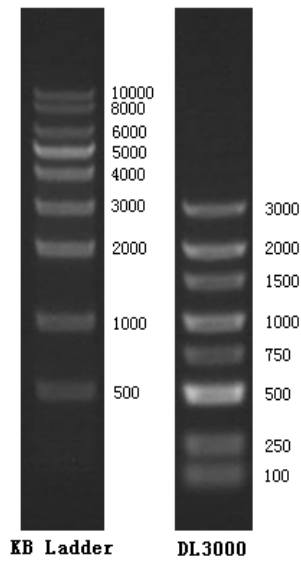


Enzyme Digestion



Lane M: KB Ladder
Lane 1: OHu05205D plasmid
Lane 2: OHu05205D plasmid digested by BamHI and PstI

Digestion Conditions:
~ 300ng plasmid digested
Digestion in water-bath, 37°C for 40 minutes
1% Agarose Gel



For research use only

860 Centennial Ave., Piscataway, NJ 08854, USA

Attachment 2**Original ORF Sequence (Including start and stop codons)**

```
ATGAAGATCT CCGTGGCTGC CATTCCCTTC TTCCTCCTCA TCACCATCGC CCTAGGGACC AAGACTGAAT CCTCCTCAG GGGACCTTAC CACCCCTCAG  
AGTGCTGCTT CACCTACACT ACCTACAAGA TCCCGCGTCA GCGGATTATG GATTACTATG AGACCAACAG CCAGTGCTCC AAGCCCGGAA TTGTCTTCAT  
CACCAAAGG GGCCATTCCG TCTGTACCAA CCCAGTGAC AAGTGGGTCC AGGACTATAT CAAGGACATG AAGGAGAACT GA
```

For research use only

860 Centennial Ave., Piscataway, NJ 08854, USA

Toll-Free: 1-877-436-7274

Tel: 1-732-885-9188

Fax: 1-732-210-0262

Email: order@genscript.comWeb: www.genscript.com