

# Certificate of Analysis

Product ID: OHu13053D Lot. No.: 817289227-1/F92041

Product Information:

Gene Symbol: HIST1H2AA Accession No.: NM\_170745

Cloning Vector: pcDNA3.1<sup>+</sup>/C-(K)DYK Gene Length\*: 396 bp

Cloning Strategy: CloneEZ Plasmid Size: 5786 bp

Antibiotic Resistance: Ampicillin, recommended concentration: 50 µg/ml Amount: 10 µg

Note: \* The stop codon has not been included in gene length calculation. And the detail sequence showed in attachment 2

Storage: Store at -20°C  
The ORF clone is shipped at room temperature, but should be kept at -20°C for long-term storage.

QC Items	Specifications	Results	
Sequencing Alignment	Sequencing results are consistent with the targeted insert sequence.	Pass	Consistent
Vector Sequence	The flanking sequences of the cloning sites are correct.	Pass	Correct Shown in the SQD file
Restriction Digests	The size of inserted fragment is correct and free of unexpected bands suggesting contamination.	Pass	Correct Shown in attachment 1
DNA Quality	Miniprep: 10 µg OD260/280=1.8~2.0 Free of contamination	Pass	≥ 10 µg OD260/280=1.87 Pure
Quality Grade	Research Grade	Pass	Research Grade
Appearance	Clear and free of foreign particles.	Pass	Clear Free of foreign particles
Additional Test		N/A	

Certified by: *Morgan* Date: 10/25/2016

Thank you for your patronage to our Gene services! To maintain this working relationship, we shall be grateful if you can add our webpage URL into your lab website. As a token of appreciation, you will be rewarded by 1,000 EZcoupon™ points. For more information, please contact us by e-mail at [web@genscript.com](mailto:web@genscript.com).

For research use only

860 Centennial Ave., Piscataway, NJ 08854, USA

Toll-Free: 1-877-436-7274

Tel: 1-732-885-9188

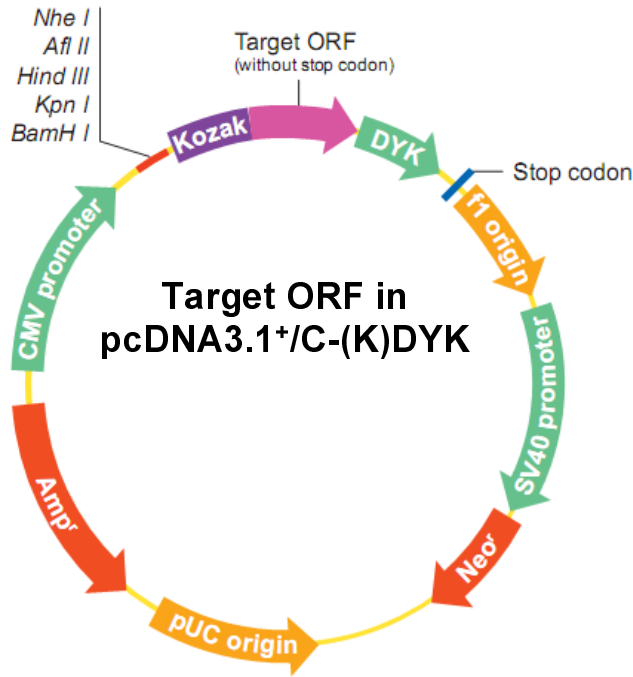
Fax: 1-732-210-0262

Email: [order@genscript.com](mailto:order@genscript.com)

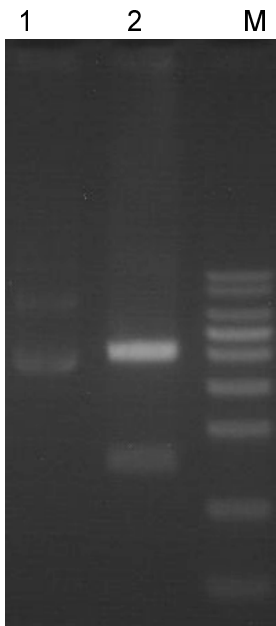
Web: [www.genscript.com](http://www.genscript.com)

Plasmid Construct Map

The ORF was cloned in pcDNA3.1<sup>+</sup>/C-(K)DYK by CloneEZ.

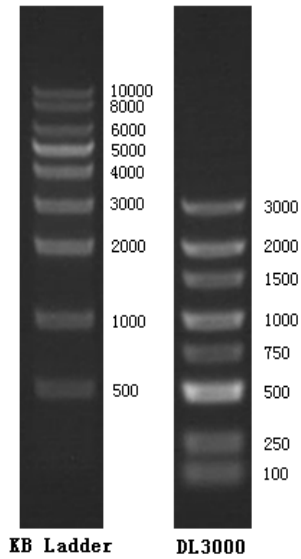


Enzyme Digestion



Lane M: KB Ladder  
Lane 1: OHu13053D plasmid  
Lane 2: OHu13053D plasmid digested by KpnI and SmaI

**Digestion Conditions:**  
~ 300ng plasmid digested  
Digestion in water-bath, 37°C for 40 minutes  
1% Agarose Gel



For research use only

860 Centennial Ave., Piscataway, NJ 08854, USA

## Attachment 2

## Original ORF Sequence (Including start and stop codons)

```
ATGTCCTGGAC GAGGGAAGCA GGGAGGAAAA GCACGCGCCA AGTCTAAGTC TCGCTCTTCT AGAGCGGGTT TGCAGTTTCC CGTAGGCCGG ATCCATCGTC
TGCTTCGTAA GGGAAACTAT GCAGAGCGGA TAGGGGCAGG CGCACCAGTG TATTGGCGG CAGTGTTAGA GTATCTCACA GCAGAAATCC TTGAGCTGGC
AGGCAATGCG TCTCGGATA ACAAAAAAAC TCGCATTATT CCCC GCCACC TGCAGCTAGC GATCCGCAAT GATGAGGAAC TCAATAAGCT TTTGGGCGGC
GTGACCATTG CCCAGGGCGG AGTCTGCCT AACATT CAGG CAGTGCTGCT GCCAAGAAG ACTGAGAGTC ACCACCATAA AGCCCAAAGC AAGTAA
```

For research use only

860 Centennial Ave., Piscataway, NJ 08854, USA

Toll-Free: 1-877-436-7274

Tel: 1-732-885-9188

Fax: 1-732-210-0262

Email: [order@genscript.com](mailto:order@genscript.com)Web: [www.genscript.com](http://www.genscript.com)