

# Certificate of Analysis

Product ID: OHu19662D Lot. No.: 817289423-1/F92786

Product Information:

Gene Symbol: CCDC140 Accession No.: NM\_153038

Cloning Vector: pcDNA3.1<sup>+</sup>/C-(K)DYK Gene Length\*: 492 bp

Cloning Strategy: CloneEZ Plasmid Size: 5882 bp

Antibiotic Resistance: Ampicillin, recommended concentration: 50 µg/ml Amount: 10 µg

Note: \* The stop codon has not been included in gene length calculation. And the detail sequence showed in attachment 2

Storage: Store at -20°C  
The ORF clone is shipped at room temperature, but should be kept at -20°C for long-term storage.

QC Items	Specifications	Results	
Sequencing Alignment	Sequencing results are consistent with the targeted insert sequence.	Pass	Consistent
Vector Sequence	The flanking sequences of the cloning sites are correct.	Pass	Correct Shown in the SQD file
Restriction Digests	The size of inserted fragment is correct and free of unexpected bands suggesting contamination.	Pass	Correct Shown in attachment 1
DNA Quality	Miniprep: 10 µg OD260/280=1.8~2.0 Free of contamination	Pass	≥ 10 µg OD260/280=1.87 Pure
Quality Grade	Research Grade	Pass	Research Grade
Appearance	Clear and free of foreign particles.	Pass	Clear Free of foreign particles
Additional Test		N/A	

Certified by: *Morgan* Date: 10/25/2016

Thank you for your patronage to our Gene services! To maintain this working relationship, we shall be grateful if you can add our webpage URL into your lab website. As a token of appreciation, you will be rewarded by 1,000 EZcoupon™ points. For more information, please contact us by e-mail at [web@genscript.com](mailto:web@genscript.com).

For research use only

860 Centennial Ave., Piscataway, NJ 08854, USA

Toll-Free: 1-877-436-7274

Tel: 1-732-885-9188

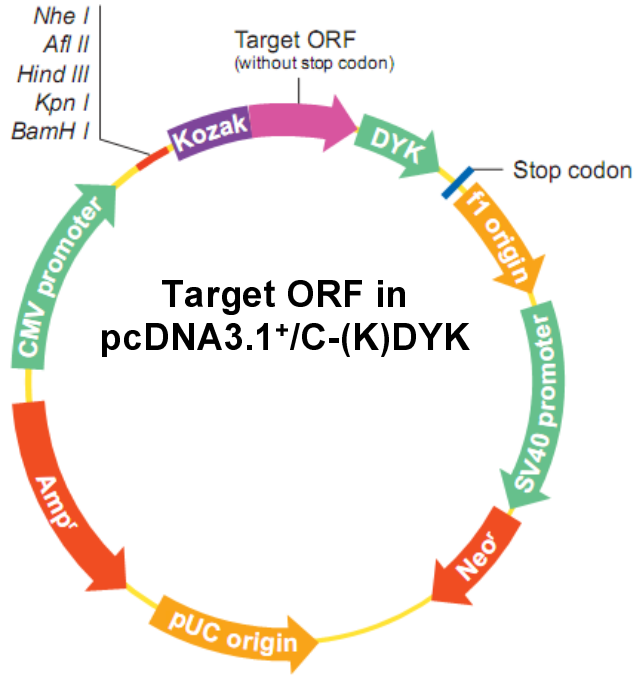
Fax: 1-732-210-0262

Email: [order@genscript.com](mailto:order@genscript.com)

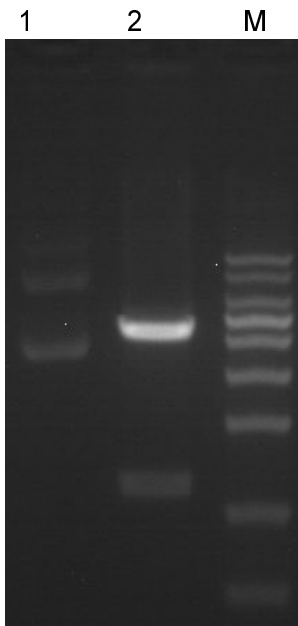
Web: [www.genscript.com](http://www.genscript.com)

Plasmid Construct Map

The ORF was cloned in pcDNA3.1<sup>+</sup>/C-(K)DYK by CloneEZ.

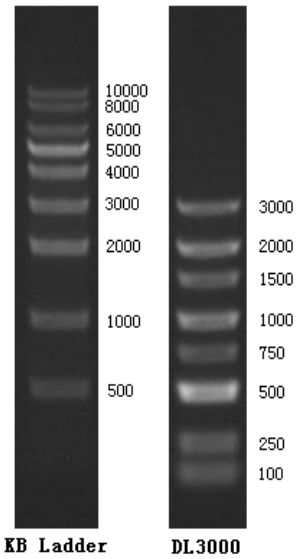


Enzyme Digestion



Lane M: KB Ladder  
Lane 1: OHu19662D plasmid  
Lane 2: OHu19662D plasmid digested by SmaI

**Digestion Conditions:**  
~ 300ng plasmid digested  
Digestion in water-bath, 37°C for 40 minutes  
1% Agarose Gel



For research use only

860 Centennial Ave., Piscataway, NJ 08854, USA

**Attachment 2****Original ORF Sequence (Including start and stop codons)**

```
ATGGGAGATG AATGTTCAA CCCAGATCTC CTCGCTGAGC CTGGAAGCTC GCCACCGTGG GATCACGGGA ACCAGAGGCA AGAGGCTGCG AATGAGTCCA  
ACACCCGCGT TCCTCGAGTT TAAAAAGCAC ACCTGGGGCC AGAGACTGCA CAGCCAATA AACGGAGTAA ACGCAACAGG TGGAGGAGGC AGAGTTGTCA  
GGGGCCAAGC CCGGCGCGAT CTGGCCAGTT CTTGGGGAGC GCGGACCTGG GACTGCAGAG AGGCGTTTTG AAGAGTGCTG CGCGCACCTG CCTCTCGGAG  
ATATCCAAC CCACCCGGGC GTCTCCTGAG AGCGCACAGT CCACAGACCC CGGGAGGGCT GCCCGCCCTA GGACACGTAC TCTCCCGACC CCTCACTCTT  
TCAAAATTGG GGAAGAGGCG GAGGAGATGA AAAAGAAGAA AGAGAGAAAG AGAAGAAAAG AGAGAAAGAA GAAAGAAAT TTTAAAAAAT AA
```

For research use only

860 Centennial Ave., Piscataway, NJ 08854, USA

Toll-Free: 1-877-436-7274

Tel: 1-732-885-9188

Fax: 1-732-210-0262

Email: [order@genscript.com](mailto:order@genscript.com)Web: [www.genscript.com](http://www.genscript.com)