

Novel Coomassie Brilliant Blue Stain



Technical Manual No. 0275

Version 02152008

I	Description.....	1
II	Examples.....	1
III	Sensitivity	2
IV	Shipping and Storage.....	2
V	Troubleshooting.....	2
VI	Ordering Information.....	3

I. DESCRIPTION

GenScript Novel Coomassie Brilliant Blue Stain is specially formulated for fast, sensitive detection and safe, non-hazardous disposal. This ready-to-use stain does not contain any methanol or acetic acid and is extensively tested for safety.

II. EXAMPLES

Before using, shake the Novel Coomassie Brilliant Blue Stain vigorously. After electrophoresis, refer to the following protocol for maximum sensitivity. Make sure the gel moves freely in the water or stain to facilitate diffusion during all steps.

1. **Rinse** the mini-gel three times for five minutes each at room temperature using deionized water to remove the SDS and buffer salts, which interfere with binding of the dye to the protein.
2. **Stain** the gel with enough GenScript Novel Coomassie Brilliant Blue Stain (≈30 ml) to cover the gel. Stain for 20 minutes in a boiled water bath. Bands will begin to develop within minutes. Alternatively, the gel may be stained overnight at room temperature without any risk of increased background. After incubation, discard the stain. GenScript Novel Coomassie Brilliant Blue Stain cannot be re-used.
3. **Wash** the mini-gel with 100 ml of water for 20 minutes in a boiled water bath. If the results are less than ideal, increase the wash time. Several changes of water may be necessary for optimal results. The gel can be left in the water for several days without any loss of sensitivity.

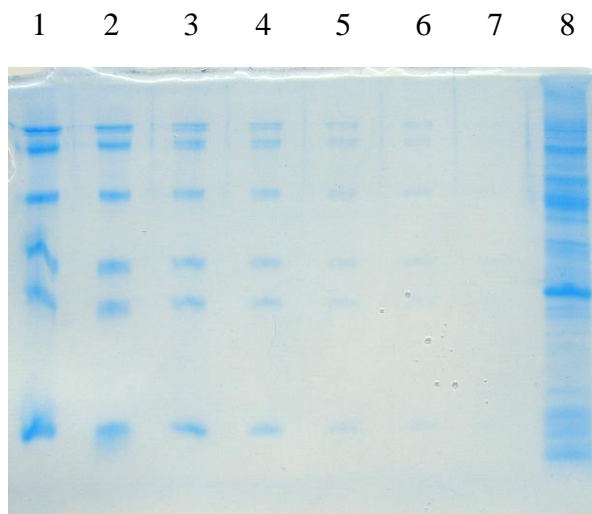


Figure 1. Tris-Gly 15% gel stained with GenScript Novel Coomassie Brilliant Blue Stain

Lane 1: 250 ng protein per band

Lane 2: 125 ng protein per band

Lane 3: 50 ng protein per band

Lane 4: 25 ng protein per band

Lane 5: 12 ng protein per band

Lane 6: 8 ng protein per band

Lane 7: 5 ng protein per band

Lane 8 : 5 µl *E. coli* lysate

III. SENSITIVITY

The sensitivity of GenScript Novel Coomassie Brilliant Blue Stain is over 8 ng of protein per band

IV. SHIPPING AND STORAGE

Store GenScript Novel Coomassie Brilliant Blue Stain at 2 to 8°C. Always close the plug tightly.

V. TROUBLESHOOTING

Use the table below to solve and avoid common problems.

Problem	Probable Cause	Solution
No band development	The gel is over 1 mm thick.	Increase the immersion time.
	The gel has high concentration of polyacrylamide.	Increase the immersion time.
	There is SDS interference.	Before staining, wash the gel with plenty of water.



VI. ORDERING INFORMATION

Novel Coomassie Brilliant Blue Stain, Cat. No. C01714
For Research Use Only.

GenScript Corporation

120 Centennial Ave., Piscataway, NJ 08854

Tel: 732-885-9188, 732-357-3839

Fax: 732-210-0262, 732-885-5878

E-mail: info@genscript.com

Web: <http://www.Genscript.com>