

## Human Proinsulin Antibody, mAb, Mouse

### Products information

Cat.No	Clone	Ig Subclass
A01728	1A3D8	IgG1, $\kappa$
A01729	1C6D6	IgG1, $\kappa$

**Host:** Mouse

**Immunogen:** Human recombinant proinsulin.

**Purification:** Protein A affinity column

**Conjugation:** Unconjugated

**Version:** 08/22/2011

### Description

Proinsulin is the prohormone precursor to insulin made in the beta cells of the islets of Langerhans, specialized regions of the pancreas. It is synthesized in the endoplasmic reticulum, where it is folded and its disulfide bonds are oxidized. It is then transported to the Golgi apparatus where it is packaged into secretory vesicles, and where it is processed by a series of proteases to form mature insulin. Mature insulin has 35 fewer amino acids; 4 are removed altogether, and the remaining 31 forms C-peptide. The C-peptide is abstracted from the center of the proinsulin sequence; the two other ends (the B chain and A chain) remain connected by disulfide bonds.

**GenScript Human Proinsulin Antibody, mAb, Mouse** is produced from the hybridoma resulting from fusion of SP2/O-Ag14 myeloma and B-lymphocytes obtained from mouse immunized with human recombinant proinsulin.

### Species Reactivity

Proinsulin monoclonal antibodies (1A3D8, 1C6D6) recognize human proinsulin.

### Storage Buffer

PBS, pH 7.4, containing 0.02% sodium azide.

### Storage

**GenScript Human Proinsulin Antibody, mAb, Mouse** should be stored at  $-20^{\circ}\text{C}$  or below until use. Avoid repeated freezing and thawing cycles.

### Applications

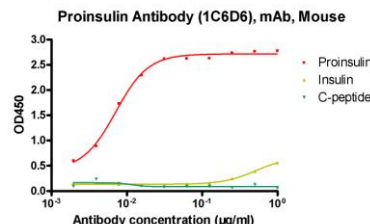
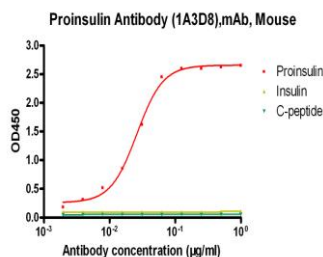
These antibodies are perfect choice for *in vitro* diagnostic assay development. And they are prepared for non-clinical research use only. The recommended pairs are based on our laboratory results.

### Example

Cross-reactivity of PSA monoclonal antibodies by Indirect ELISA:

#### General procedures:

1. Microplate was coated with Proinsulin, Insulin or C-peptide respectively, followed by 3 washing cycles.
2. Incubation with mouse anti-Proinsulin antibody followed by 3 washing cycles.
3. Incubation with goat anti-mouse IgG conjugated to peroxidase, followed by 3 washing cycles.
4. Colorimetric determination of bound peroxidase activity.



\*\* For non-clinical research use only. \*\*

860 Centennial Ave., Piscataway, NJ 08854, USA

Toll-free Tel: 1-877-436-7274

Fax: 1-732-210-0262

Email: [product@genscript.com](mailto:product@genscript.com)

Web: [www.genscript.com](http://www.genscript.com)