

Human PSA Antibody, mAb, Mouse

Products information

Cat.No	Clone	Ig Subclass
A01663	5B10D4	IgG1, κ
A01664	8A9B8	IgG2b, κ
A01667	1G9G8	IgG1, κ
A01670	4A5D10	IgG2a, κ
A01673	1A7D4	IgG1, κ

Host: Mouse

Immunogen: human total PSA purified from seminal plasma.

Purification: Protein A affinity column

Conjugation: Unconjugated

Version: 08/22/2011

Description

Prostate-specific antigen (PSA) is also known as kallikrein III, seminin, semenogelase, γ-seminoprotein and P-30 antigen. It is a serine protease enzyme produced by the cells of the prostate gland. Most of PSA in the blood which is bound to serum proteins is known as total PSA, while a small amount which is not protein bound to is called free PSA. PSA liquifies the semen in the seminal coagulum and allows sperm to swim freely. PSA is often elevated in the presence of prostate cancer and in other prostate disorders. A blood test to measure PSA is considered to be the most effective test currently available for the early detection of prostate cancer. Furthermore, rising levels of PSA over time are associated with both localized and metastatic prostate cancer (CaP).

GenScript Human PSA Antibody, mAb, Mouse is produced from the hybridoma resulting from fusion of SP2/0-Ag14 myeloma and B-lymphocytes obtained from mouse immunized with human total PSA purified from seminal plasma.

Species Reactivity

PSA monoclonal antibodies (5B10D4, 8A9B8, 1G9G8, 4A5D10 and 1A7D4) recognize total PSA, free PSA and ACT- PSA Complex (Prostate Specific Antigen / α-1 Antichymotrypsin Complex).

Product Buffer

PBS, pH 7.4, containing 0.02% sodium azide.

Storage

GenScript Human PSA Antibody, mAb, Mouse should be stored at -20°C or below until use. Avoid repeated freezing and thawing cycles.

Applications

These antibodies are perfect choice for *in vitro* diagnostic assay development. And they are prepared for non-clinical research use only. The recommended pairs are based on our laboratory results.

Capture Detection	A01663 (5B10D4)	A01664 (8A9B8)	A01667 (1G9G8)	A01670 (4A5D10)	A01673 (1A7D4)
A01663 (5B10D4)		+++	++	++	+++
A01664 (8A9B8)	-		-	+++	-
A01667 (1G9G8)	-	+++		-	++
A01670 (4A5D10)	-	-	-		-
A01673 (1A7D4)	++	-	++	++	

The above Data was achieved by Sandwich ELISA. '+' means reaction and '-' means no reaction. The number of '+' represents reaction intensity.

** For non-clinical research use only. **

860 Centennial Ave., Piscataway, NJ 08854, USA

Toll-free Tel: 1-877-436-7274

Fax: 1-732-210-0262

Email: product@genscript.com

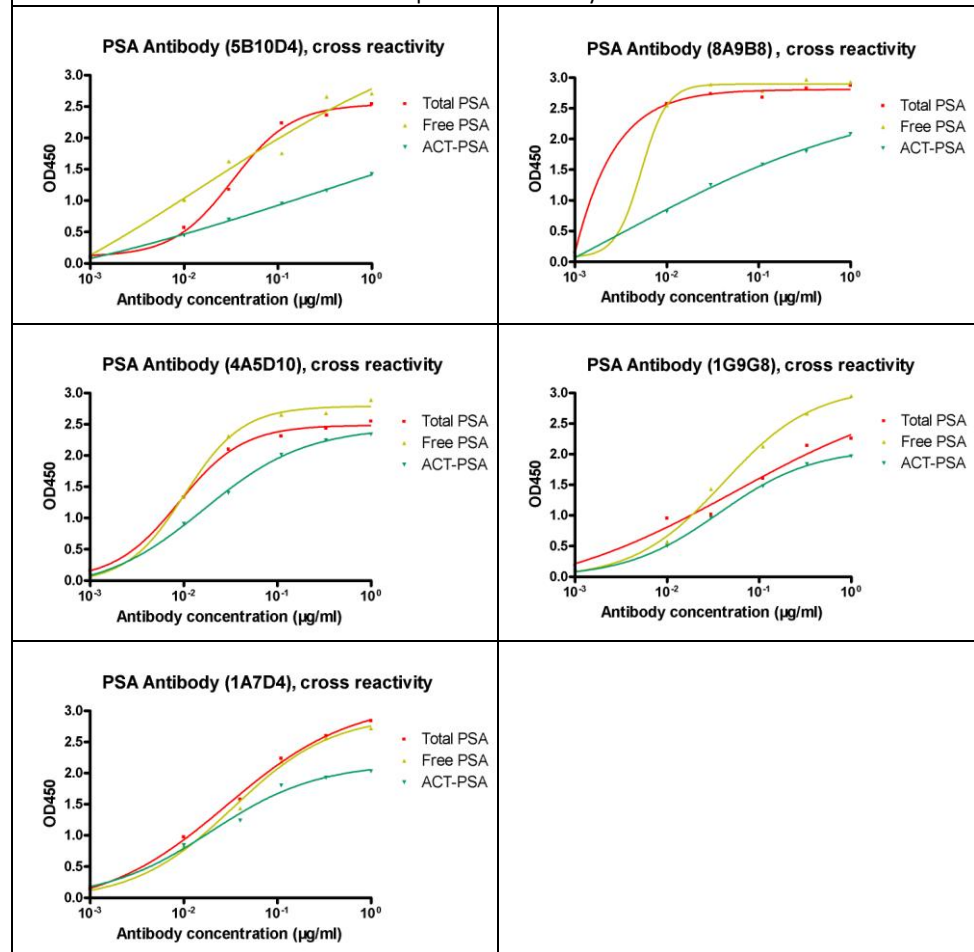
Web: www.genscript.com

Example

Cross-reactivity of PSA monoclonal antibodies by Indirect ELISA:

General conditions:

1. Microplate was coated with total PSA, free PSA, ACT-PSA respectively, followed by 3 washing cycles.
2. Incubation with mouse anti-PSA followed by 3 washing cycles.
3. Incubation with goat anti-mouse IgG conjugated to peroxidase, followed by 3 washing cycles.
4. Colorimetric determination of bound peroxidase activity.



** For non-clinical research use only. **

860 Centennial Ave., Piscataway, NJ 08854, USA

Toll-free Tel: 1-877-436-7274

Fax: 1-732-210-0262

Email: product@genscript.com

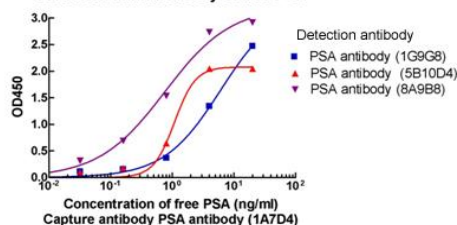
Web: www.genscript.com

Antibody pairs analysis of PSA monoclonal antibodies by Sandwich ELISA:

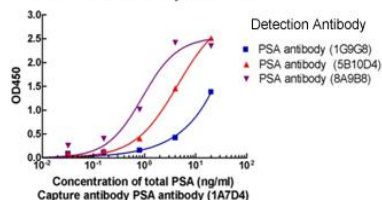
General conditions:

1. Microplate was coated with a capture antibody against PSA, followed by 3 washing cycles.
2. Incubation with free PSA or total PSA followed by 3 washing cycles.
3. Incubation with peroxidase conjugated detection antibody against PSA, followed by 3 washing cycles.
4. Colorimetric determination of bound peroxidase activity.

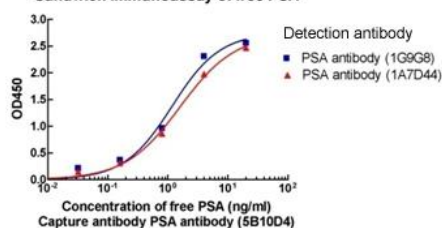
Sandwich Immunoassay of free PSA



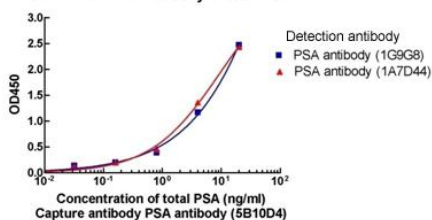
Sandwich Immunoassay of total PSA



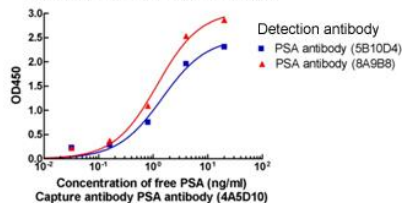
Sandwich Immunoassay of free PSA



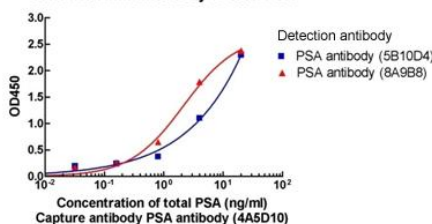
Sandwich Immunoassay of total PSA



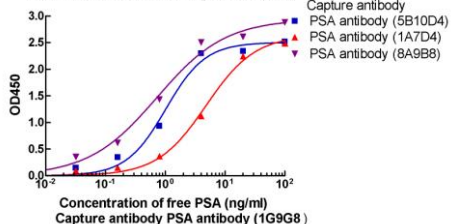
Sandwich Immunoassay of free PSA



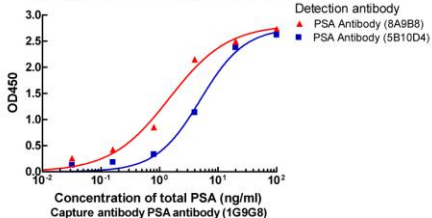
Sandwich Immunoassay of total PSA



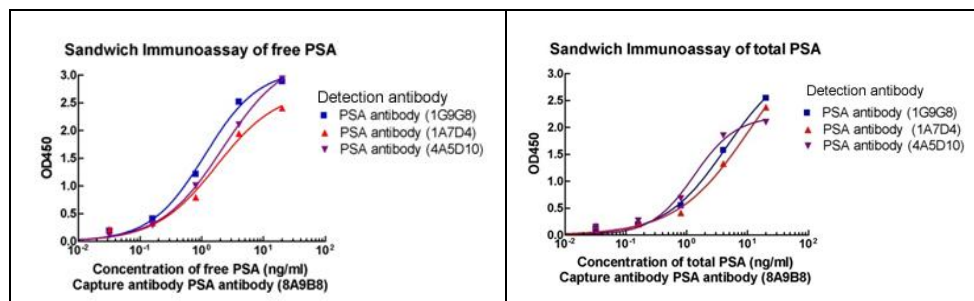
Sandwich Immunoassay of free PSA



Sandwich Immunoassay of total PSA



** For non-clinical research use only. **



** For non-clinical research use only. **

860 Centennial Ave., Piscataway, NJ 08854, USA

Toll-free Tel: 1-877-436-7274

Fax: 1-732-210-0262

Email: product@genscript.com

Web: www.genscript.com